



**PATENTED**



**KEA BUSHINGS WITH SPRING-LOADED SYSTEM**

KEA bushings enable slim and modern furniture designs and are ideal for small side tables, coffee tables, cabinets, and shelf systems.

The fitting eliminates the need for corner brackets and allows legs to be fastened directly into the furniture construction for a clean and simple design.

Once the fitting and hanger bolt are installed, the leg is simply screwed into place. The integrated disc spring system allows further adjustment, making it easy to position non-round legs correctly.

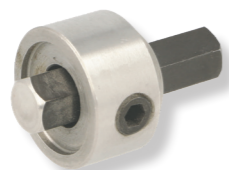
Square, round, and triangular leg plates are available for heavy-duty applications in M8 and M10 threads.

Optional installation tools are also available.

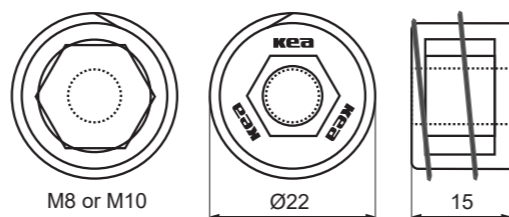


**KEA SCREW-IN BUSHING**

<b>Material:</b>	Zamak, plain
<b>Bore:</b>	Ø22 mm x 15 mm
<b>Threaded hole:</b>	M8 & M10
<b>M size:</b>	<b>Item No.:</b>
M8	# 11.07.010
M10	# 11.07.011



Tool for insert.  
Item No. # 11.07.025

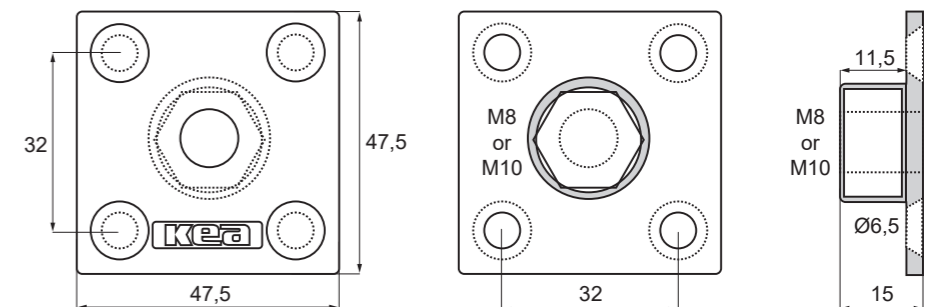


**KEA SCREW-IN BUSHING SQUARE PLATE**

<b>Material:</b>	Zamak, plain
<b>Size:</b>	47,5 x 47,5 mm
<b>Threaded hole:</b>	M8 & M10
<b>Holes:</b>	c/c 32 mm
<b>M size:</b>	<b>Item No.:</b>
M8	# 11.07.001
M10	# 11.07.002



**PATENTED**



## KEA SCREW-IN BUSHING - ROUND

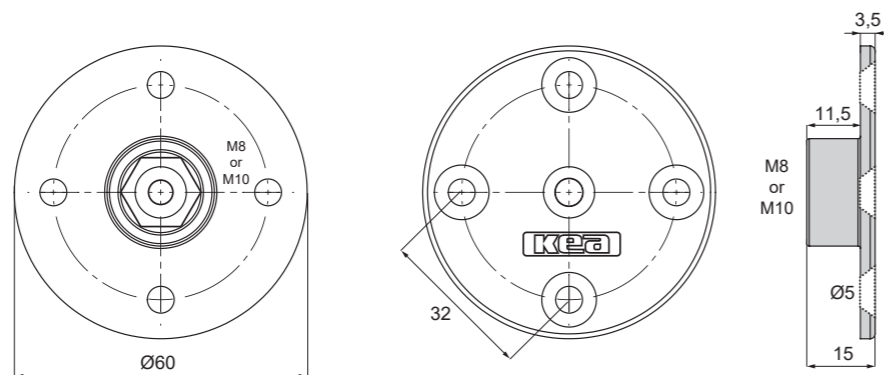


### KEA SCREW-IN BUSHING ROUND PLATE

**Material:** Zamak, plain  
**Size:** Ø60 mm  
**Threaded hole:** M8 & M10  
**Hole:** c/c 32 mm  
**M size:** Item No.:  
 M8 # 11.07.005  
 M10 # 11.07.006



**PATENTED**

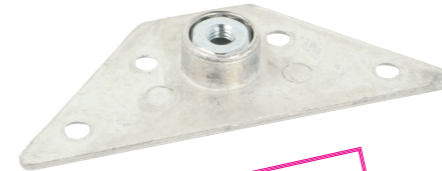


## KEA SCREW-IN BUSHING - TRIANGULAR



### KEA SCREW-IN BUSHING TRIANGULAR PLATE

**Material:** Zamak, plain  
**Size:** 123,5 x 33 x 65 mm  
**Threaded hole:** M8 & M10  
**M size:** Item No.:  
 M8 # 11.07.015  
 M10 # 11.07.016



**PATENTED**

The triangular KEA has been tested by SP Swedish National Testing and Research Institute and has proven strong even for bed frame use.

